



2012: PORTFOLIO

TIME TO SET OFF



02 | WORKS ADIDAS

02 WORKS ADIDAS

UCL FINALE ROME 2009
PRODUCT DESIGN/GRAPHIC
BY RENÉ SEUBERT



ADVERTISING BY ADIDAS SPORTSMARKETING

02 WORKS ADIDAS

WORLD CUP FINAL MATCHBALL «JOBULANI»
PRODUCT DESIGN/GRAPHIC AND 3D RENDERING
BY RENÉ SEUBERT



ADVERTISING BY ADIDAS SPORTSMARKETING



ADVERTISING BY ADIDAS SPORTSMARKETING

02 WORKS ADIDAS

OFFICIAL MATCHBALL
UEFA CHAMPIONSLEAGUE FW10
PRODUCT DESIGN/GRAPHIC AND RENDERING
BY RENÉ SEUBERT



ADVERTISING BY ADIDAS SPORTS MARKETING



02 WORKS ADIDAS

OFFICIAL MATCHBALL
DEUTSCHE FUSSBALL BUNDESLIGA FW10
PRODUCT DESIGN/GRAPHIC AND RENDERING
BY RENÉ SEUBERT



02 WORKS ADIDAS

OFFICIAL MATCHBALL EURO 2012
UEFA
PRODUCT DESIGN/GRAPHIC AND RENDERING
BY RENÉ SEUBERT



02 WORKS ADIDAS

PREDATOR XI GUARD

PRODUCT DESIGN/GRAPHIC, RENDERING AND
PHOTOGRAPHY
BY RENÉ SEUBERT



02 WORKS ADIDAS

F50 GRAPHIC BALL
PRODUCT DESIGN/GRAPHIC,
RENDERING, ARTWORK & PRODUCT PHOTOGRAPHY
BY RENÉ SEUBERT



02 WORKS ADIDAS

ADI5 XvsX STREETFOOTBALL
PRODUCT DESIGN/GRAPHIC,
RENDERING AND ARTWORK
BY RENÉ SEUBERT



02 WORKS ADIDAS

TENNIS APPAREL WOMENS SHIRT
RENDERING AND ARTWORK
BY RENÉ SEUBERT



02 WORKS ADIDAS

TENNIS APPAREL MENS SHIRT
RENDERING AND ARTWORK
BY RENÉ SEUBERT





03 WORKS



03 WORKS

ELECTRONIC MUSIC WARS
MUSIC/DJ LABEL
LOGO, FLYER, WEBSITE ANIMATION
BY RENÉ SEUBERT



ELECTRONIC MUSIC WARS
PROJECT 2011
JOIN THE ODESSEY

WE ARE:

DATES:

CONTACT:



03 WORKS

TAKKA TUKKA MUZIC
MUSIC/DJ LABEL
LOGO, FLYER, WEBSITE
BY RENÉ SEUBERT



03 WORKS

TAKKA TUKKA MUZIC
MUSIC/ DJ LABEL
CHARACTER DESIGN/ ILLUSTRATION
BY RENÉ SEUBERT



ONE. CREATURE | 01

EVOLUTION LEVEL 3.1 TAKKA TUKKA CREW 2018
FULL ENERGY LEVEL AT 120 BPM



TWO. CREATURE | 02

EVOLUTION LEVEL 4.5 TAKKA TUKKA CREW 2018
FULL ENERGY LEVEL AT 140 BPM



THREE. CREATURE | 03

EVOLUTION LEVEL 5.8 TAKKA TUKKA CREW 2010
FULL ENERGY LEVEL AT 130 BPM



03 WORKS

TAKKA TUKKA MUZIC
MUSIC/ DJ LABEL
CHARACTER DESIGN 3D
BY RENÉ SEUBERT



1.2.3. GANZ VIELE
TAKKA CREATURE
GOES 3D ||| 2012
TAKKA
CREATURE
GOES 3D
/01/



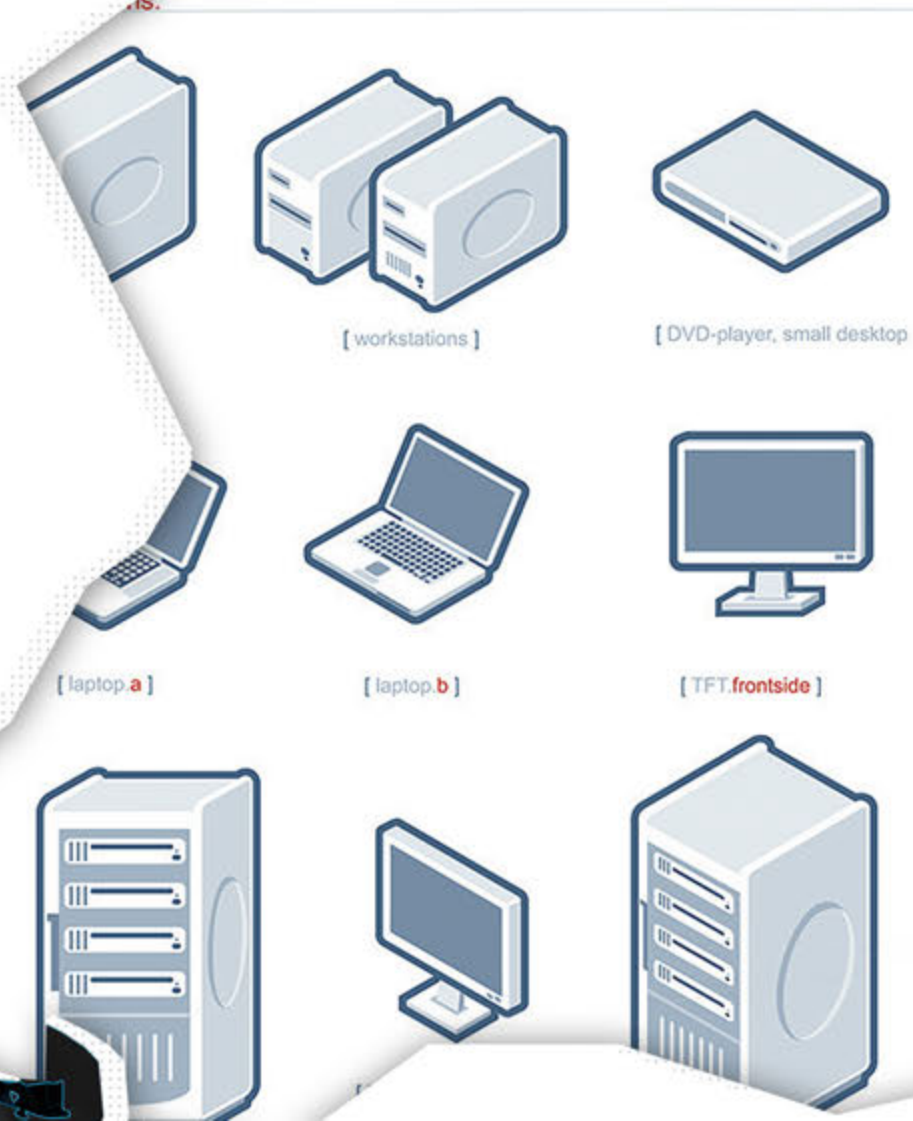
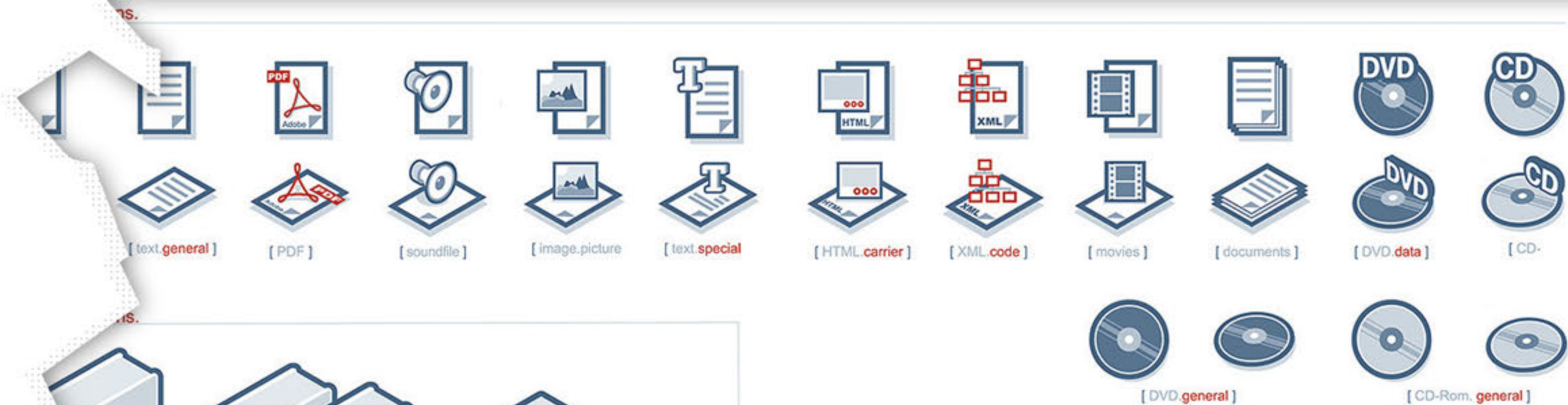
03: WORKS

AFTER NOISE MUSIC
MUSIC/ DJ LABEL
LOGO, CD-CASE & PHOTOGRAPHY
BY RENÉ SEUBERT

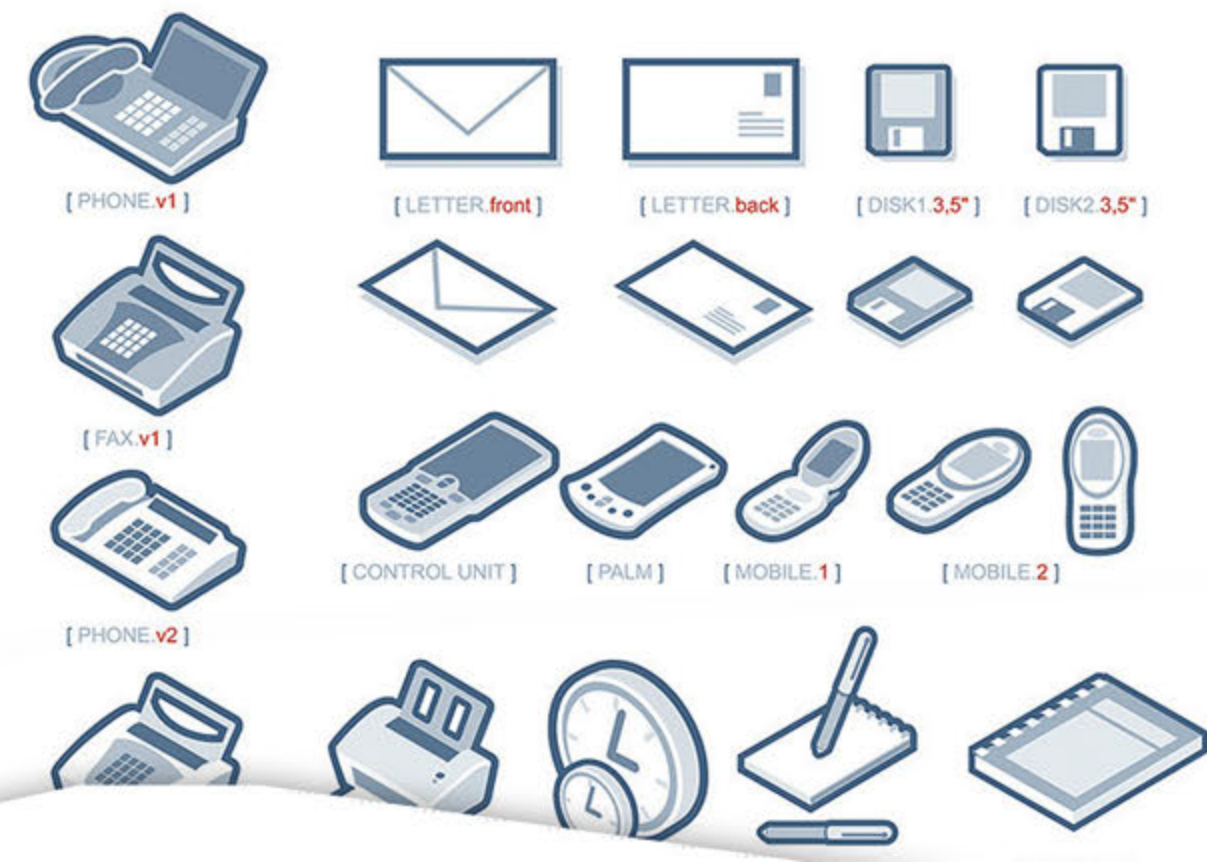


03 WORKS

ICON SET INHOUSE
MARKETINGPARTNER
ILLUSTRATION
BY RENÉ SEUBERT



:OFFICEcollection.





04 FREE ART



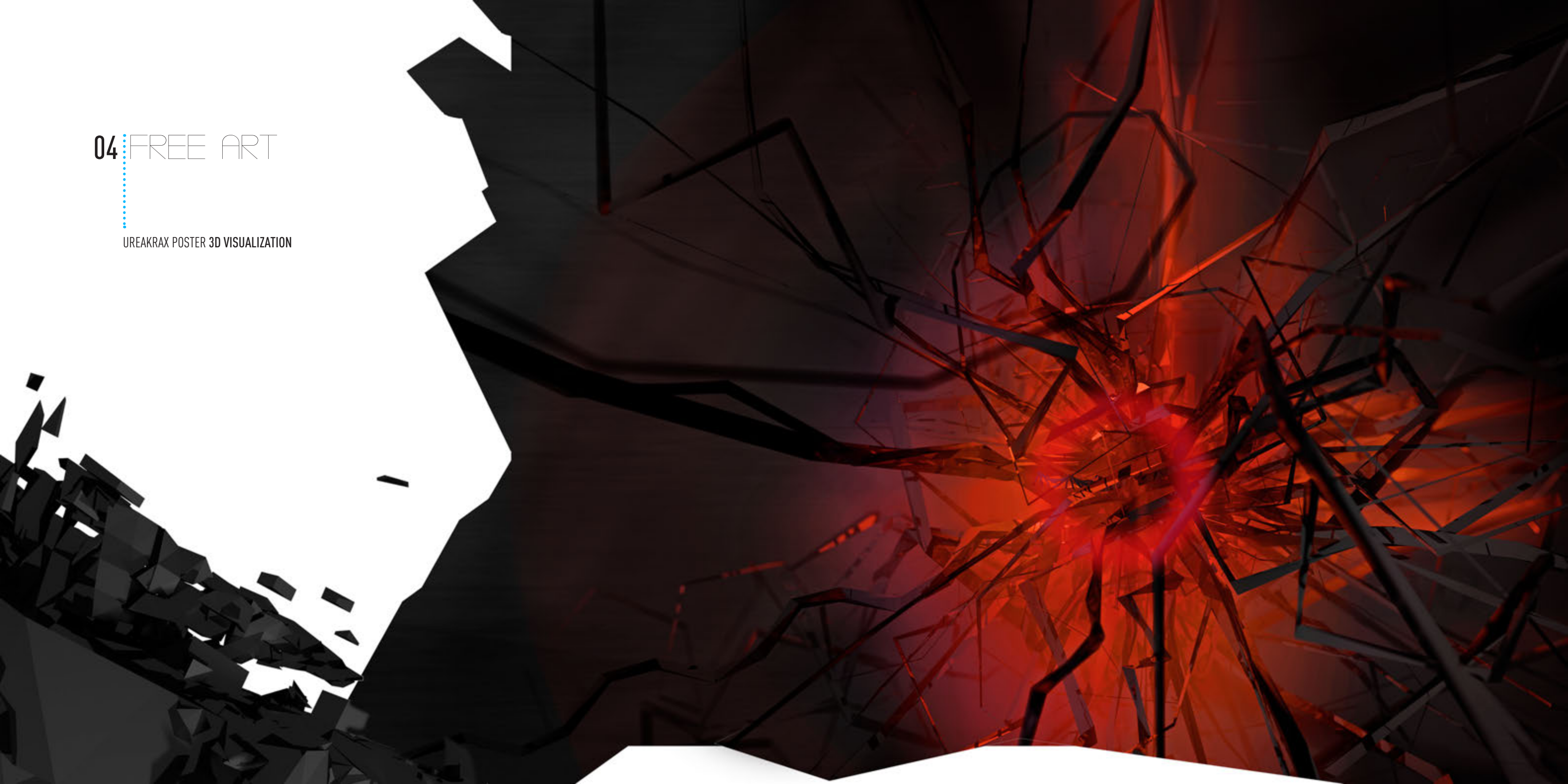
04 FREE ART

AIKIDOKA POSTER «aiki-j jutsu»



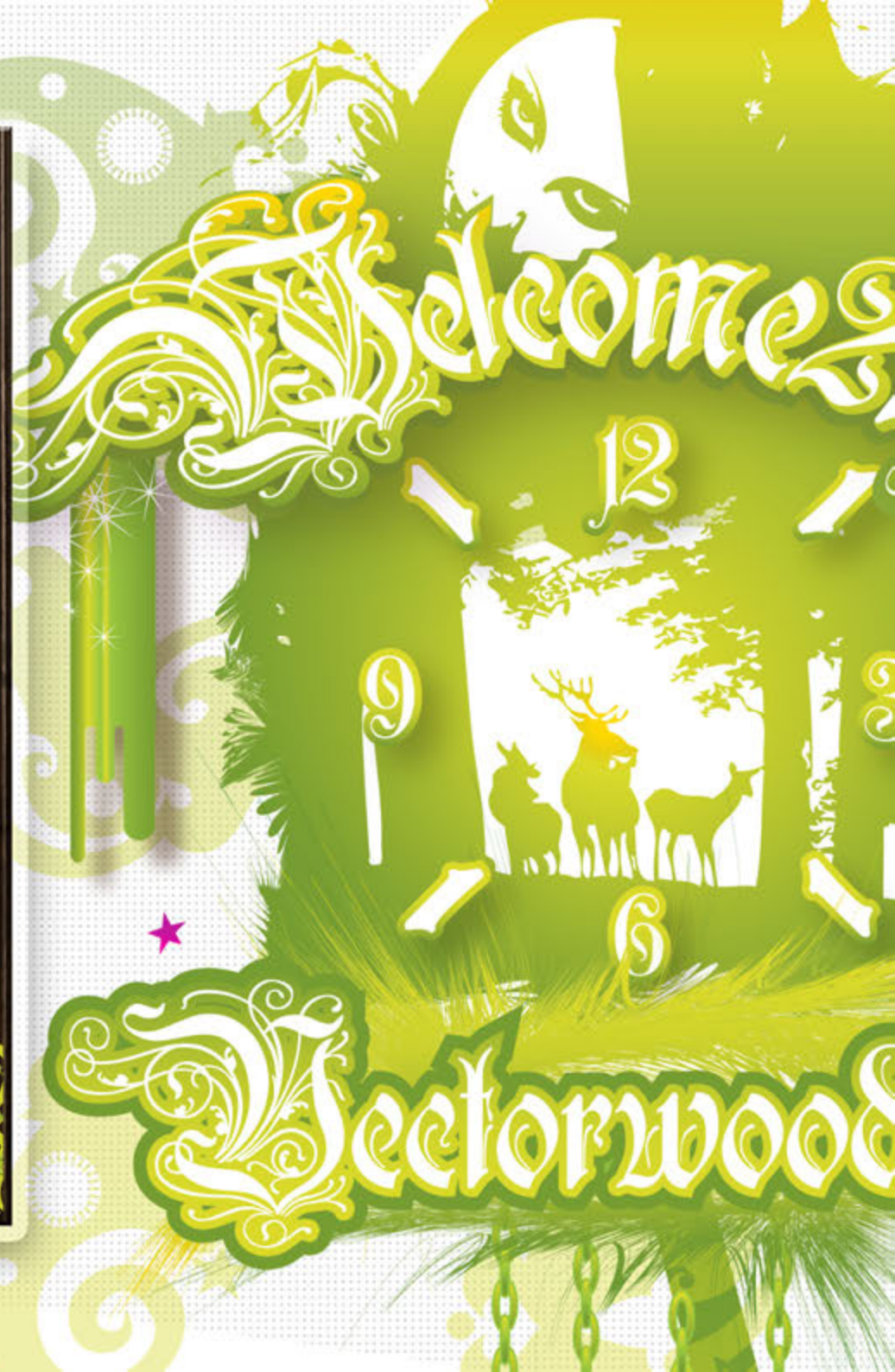
04 FREE ART

UREAKRAX POSTER 3D VISUALIZATION



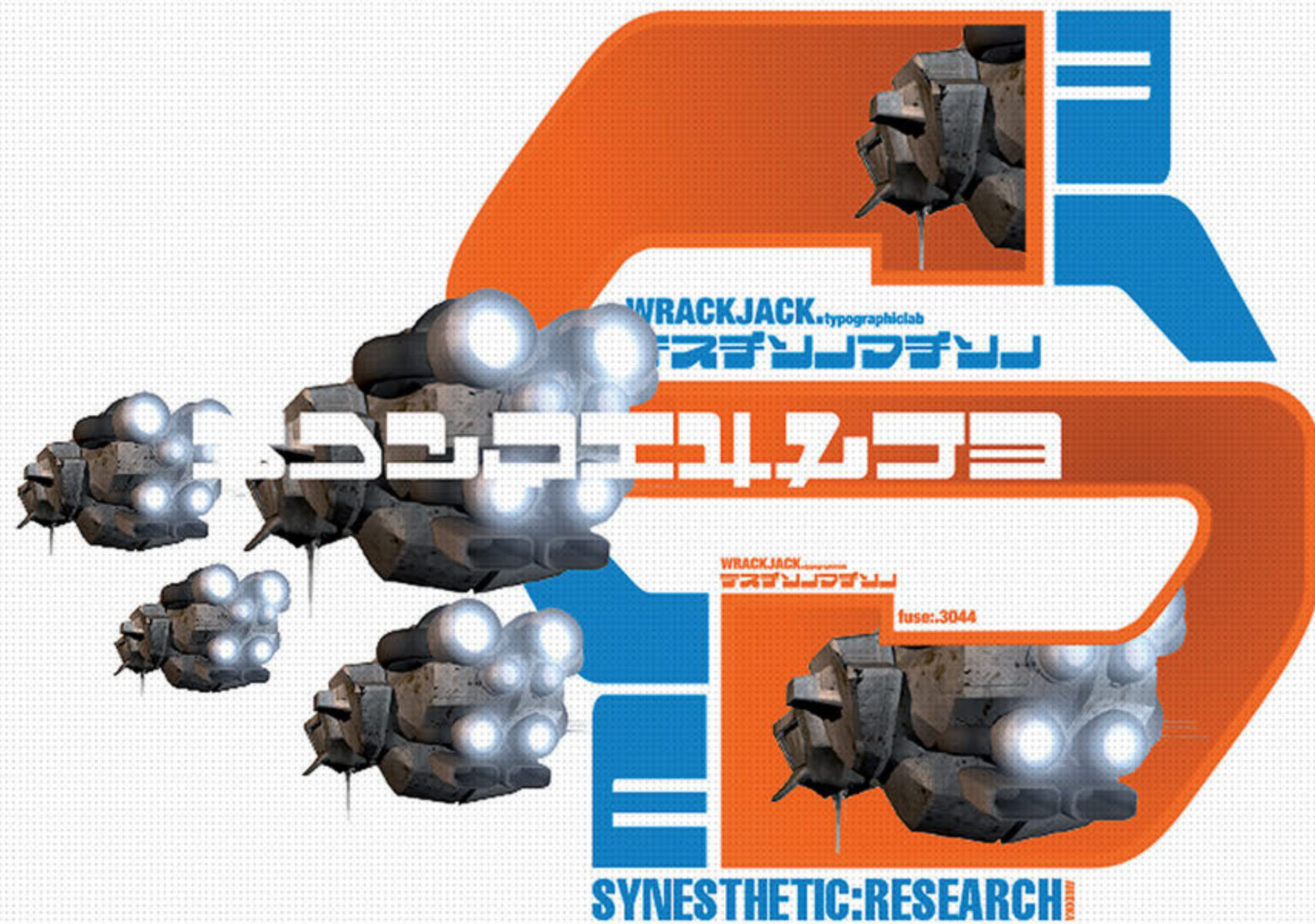
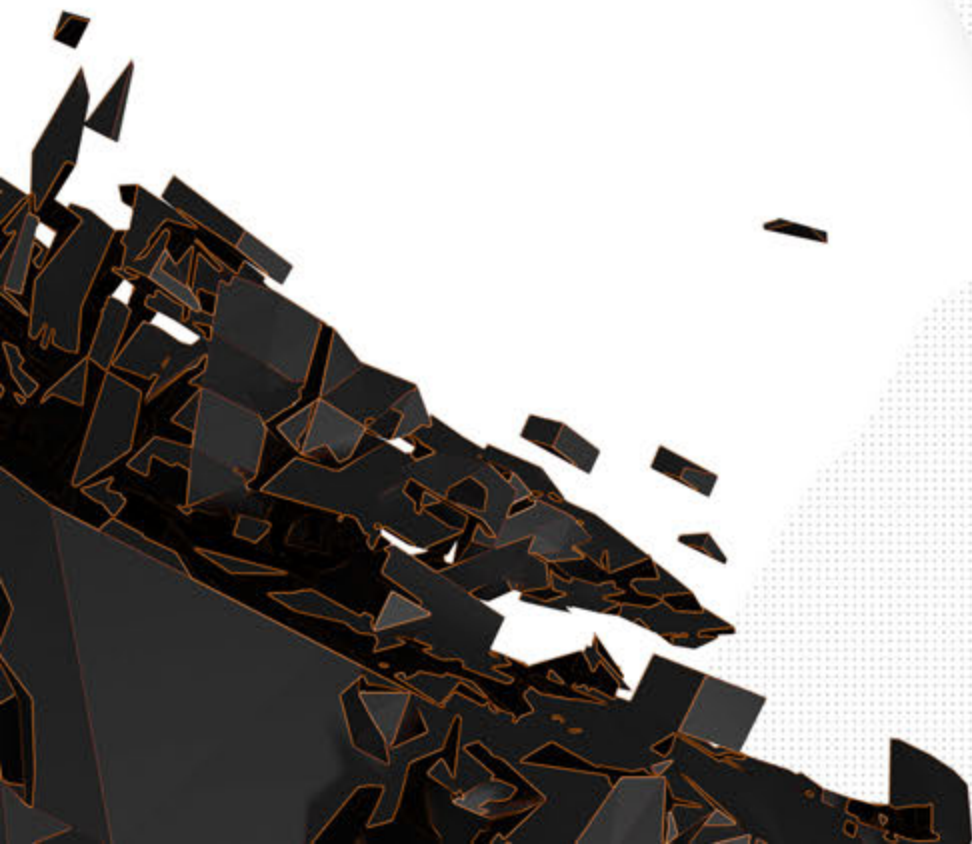
04 FREE ART

POSTER «VECTORWOODS»



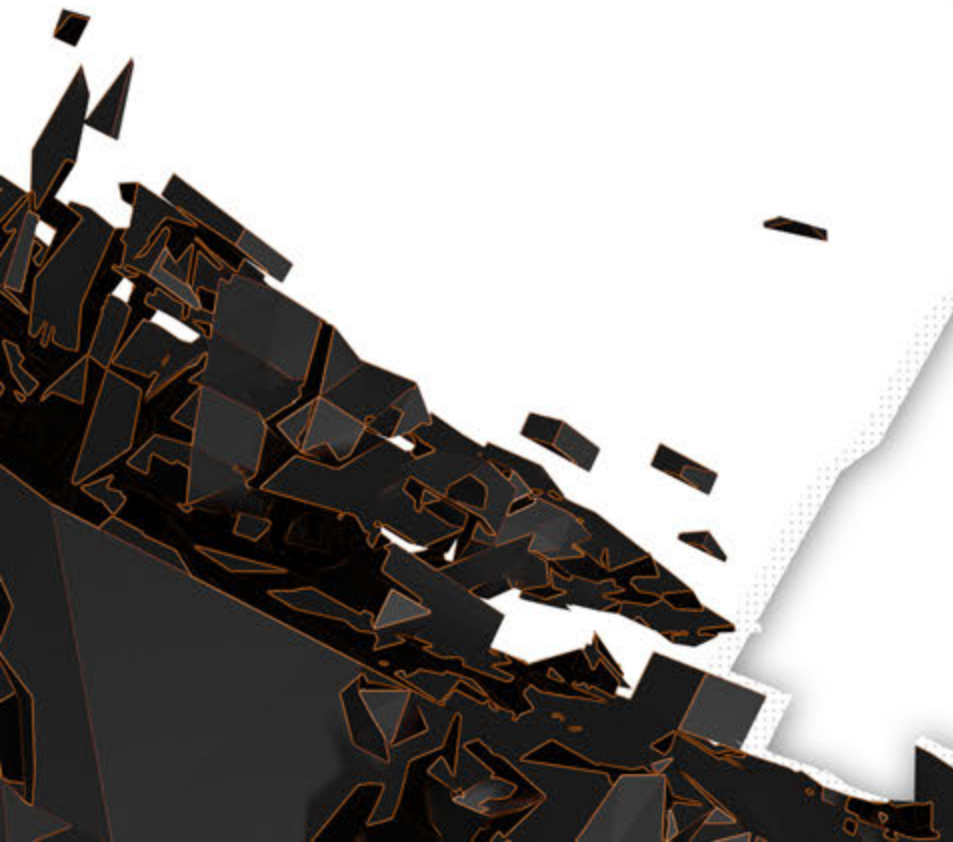
04 FREE ART

DESIGNSTUDY «WRACKJACK»



04 FREE ART

SELF PORTRAIT «NECKBREAKING BEATS»



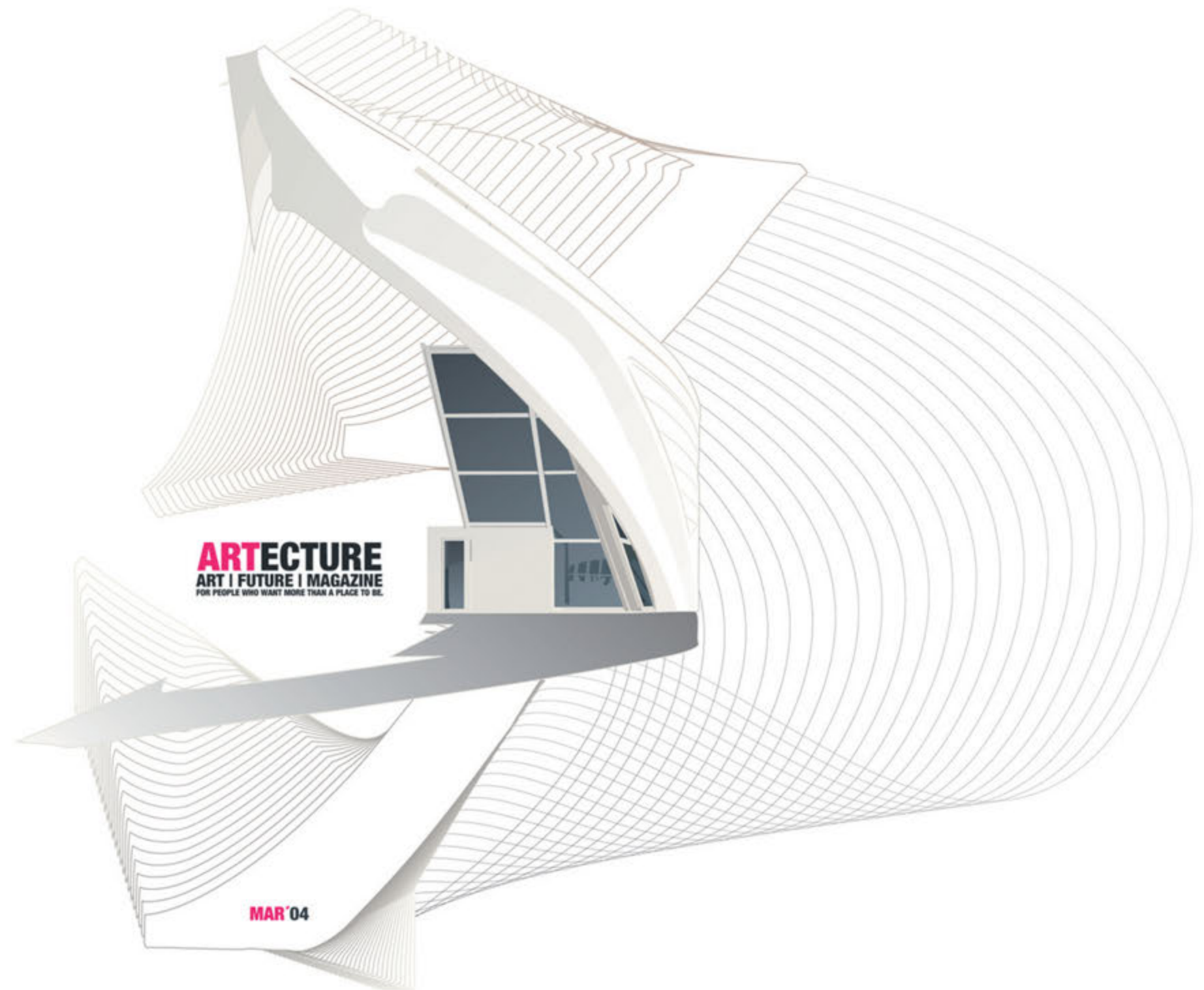
04 FREE ART

KIDS CONCEPT «DOOPDILLOOPS»



04 FREE ART

CONCEPT E-ZINE COVER «ARTECTURE»



04 FREE ART

CREATURE DESIGN «PRIME EVIL 2024»



04 FREE ART

CG ART «OMEGA 127X a.d»





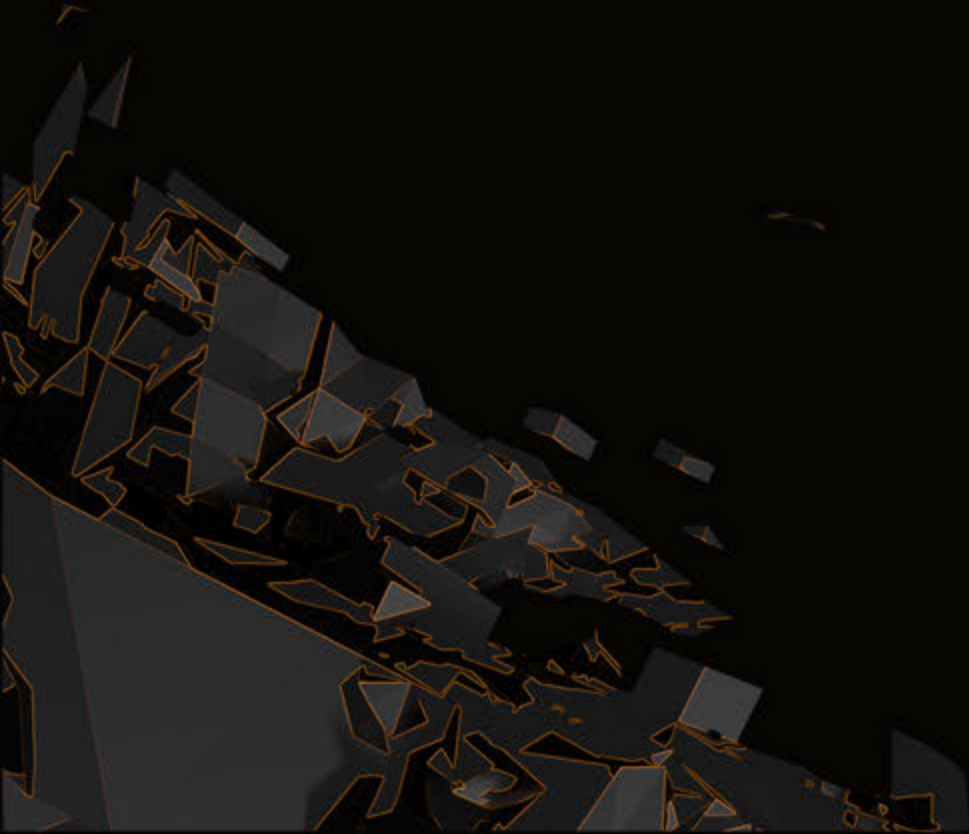
05 LOGOS

05 LOGOS

SELECTION OF COMMERCIAL AND
NON-COMMERCIAL LOGOS



06 LIGHT|||WORX



LIGHT ||| WORX

AIKIDOKA
LIGHTWORX 2010

COPYRIGHT BY REHE SEUBERT PHOTOGRAPHY 2010
32°22.3N 16°16.5W /// 33°17.8N 17°16.65W



TERRA GRANDE *listen to the mist*

LIGHT ||| WORX

AIKIDOKA
LIGHT ||| WORX 2010

COPYRIGHT BY REHE SEUBERT PHOTOGRAPHY 2010
32°22.3N 16°16.5W /// 33°17.8N 17°16.65W



PONTA DE SAO LORENCO *touching worlds*

LIGHT|||WORX

AIKIDOKA
LIGHT|||WORX 2010

COPYRIGHT BY REHE SEUBERT PHOTOGRAPHY 2010
32°22.3N 16°16.5W /// 33°17.8N 17°16.65W



PONTA DE SAO LORENCO *pea-sized*

LIGHT || WORX

AIKIDOKA
LIGHT || WORX 2010

COPYRIGHT BY REHE SEUBERT PHOTOGRAPHY 2010
32°22.3N 16°16.5W /// 33°17.8N 17°16.65W



RIBEIRA BRAVA *the blue elephant*

LIGHT ||| WORX

AIKIDOKA
LIGHT ||| WORX 2010

COPYRIGHT BY REHE SEUBERT PHOTOGRAPHY 2010
32°22.3N 16°16.5W /// 33°17.8N 17°16.65W



PONTA DEL SOL *a warm spot in time*

LIGHT ||| WORX

AIKIDOKA
LIGHT ||| WORX 2010

COPYRIGHT BY REHE SEUBERT PHOTOGRAPHY 2010
32°22.3N 16°16.5W /// 33°17.8N 17°16.65W



SERRA DE AGUA ER-104

LIGHT|||WORX

AIKIDOKA
LIGHT|||WORX 2010
COPYRIGHT BY RENE SEUBERT PHOTOGRAPHY 2010
32°22.3N 16°16.5W /// 33°17.8N 17°16.65W



MOO *liquid of energy*

LIGHT ||| WORX

AIKIDOKA
LIGHT ||| WORX 2010
COPYRIGHT BY REHE SEUBERT PHOTOGRAPHY 2010
32°22.3N 16°16.5W /// 33°17.8N 17°16.65W



SAO JORGE *surface marker buoy*

LIGHT ||| WORX

AIKIDOKA
LIGHT ||| WORX 2010
COPYRIGHT BY REHE SEUBERT PHOTOGRAPHY 2010
32°22.3N 16°16.5W ||| 33°17.8N 17°16.65W



SOMEWHERE *the odd man out*

// THANK YOU

FOR JOINING THE RIDE...

ROCK

